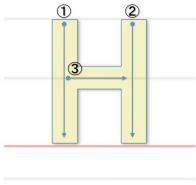
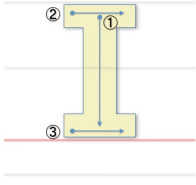


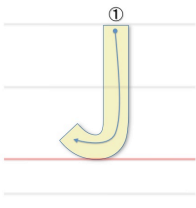
Handwriting practice lines for uppercase letters A through G. Each letter is followed by a set of three horizontal lines (top, middle, bottom) for tracing and independent practice. The middle line is highlighted in pink.



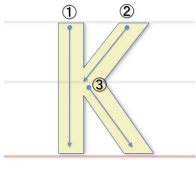
Blank handwriting practice lines for the letter H, consisting of four horizontal lines (top, middle, bottom, and baseline).



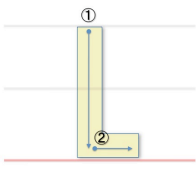
Blank handwriting practice lines for the letter I, consisting of four horizontal lines (top, middle, bottom, and baseline).



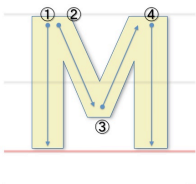
Blank handwriting practice lines for the letter j, consisting of four horizontal lines (top, middle, bottom, and baseline).



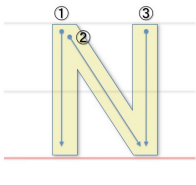
Blank handwriting practice lines for the letter K, consisting of four horizontal lines (top, middle, bottom, and baseline).



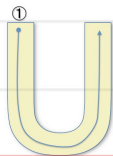
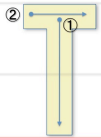
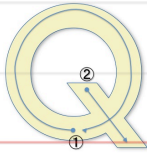
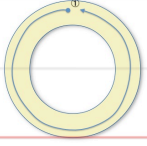
Blank handwriting practice lines for the letter L, consisting of four horizontal lines (top, middle, bottom, and baseline).



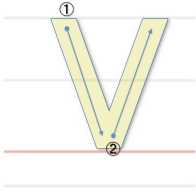
Blank handwriting practice lines for the letter M, consisting of four horizontal lines (top, middle, bottom, and baseline).



Blank handwriting practice lines for the letter N, consisting of four horizontal lines (top, middle, bottom, and baseline).



Handwriting practice lines for each letter. Each letter's tracing guide is followed by four horizontal lines: a top grey line, a middle grey line, a bottom grey line, and a baseline pink line. There are eight such sets of lines, one for each letter (O, P, Q, R, S, T, U).

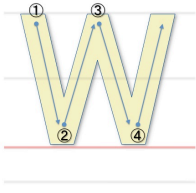


---

---

---

---

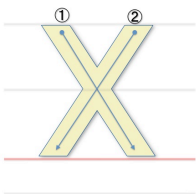


---

---

---

---

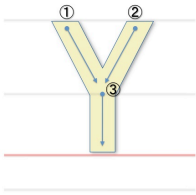


---

---

---

---

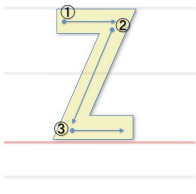


---

---

---

---



---

---

---

---